

## SkyLine Pro Electric Combi Oven 6GN1/1

ITEM # \_\_\_\_\_

MODEL # \_\_\_\_\_

NAME # \_\_\_\_\_

SIS # \_\_\_\_\_

AIA # \_\_\_\_\_


**217910 (ECO61C2C0)**

SkyLine Pro combi boilerless oven with digital control, 6x1/1GN, electric, programmable, automatic cleaning

**217920 (ECO61C2A0)**

SkyLine Pro combi boilerless oven with digital control, 6x1/1GN, electric, programmable, automatic cleaning

### Short Form Specification

#### Item No.

- Combi oven with digital interface with guided selection.
- Boilerless steaming function to add and retain moisture.
  - OptiFlow air distribution system to achieve maximum performance with 5 fan speed levels.
  - SkyClean: Automatic and built-in self cleaning system. 5 automatic cycles (soft, medium, strong, extra strong, rinse-only).
  - Cooking modes: Programs (a maximum of 100 recipes can be stored); Manual; EcoDelta cooking cycle.
  - Automatic backup mode to avoid downtime.
  - USB port to download HACCP data, programs and settings. Connectivity ready.
  - Single sensor core temperature probe.
  - Double-glass door with LED lights.
  - Stainless steel construction throughout.
  - Supplied with n.1 tray rack 1/1 GN, 67 mm pitch.

### Main Features

- Digital interface with LED backlight buttons with guided selection.
  - Boilerless steaming function to add and retain moisture for high quality, consistent cooking results.
  - Dry hot convection cycle (max 300 °C) ideal for low humidity cooking. Automatic moistener (11 settings) for boiler-less steam generation.
  - EcoDelta cooking: cooking with food probe maintaining preset temperature difference between the core of the food and the cooking chamber.
  - Programs mode: a maximum of 100 recipes can be stored in the oven's memory, to recreate the exact same recipe at any time. 4-step cooking programs also available.
  - OptiFlow air distribution system to achieve maximum performance in cooking evenness and temperature control thanks to a special design of the cooking chamber combined with high precision variable speed fan and venting valve.
  - Fan with 5 speed levels from 300 to 1500 RPM and reverse rotation for optimal evenness. Fan stops in less than 5 seconds when door is opened.
  - Single sensor core temperature probe included.
  - Automatic fast cool down and pre-heat function.
  - SkyClean: Automatic and built-in self cleaning system. 5 automatic cycles (soft, medium, strong, extra strong, rinse-only).
  - 3 different chemical options available: solid, liquid (requires optional accessory), enzymatic.
  - GreaseOut: predisposed for integrated grease drain and collection for safer operation (dedicated base as optional accessory).
  - USB port to download HACCP data, share cooking programs and configurations. USB port also allows to plug-in sous-vide probe (optional accessory).
  - Connectivity ready for real time access to connected appliances from remote and HACCP monitoring (requires optional accessory).
  - Back-up mode with self-diagnosis is automatically activated if a failure occurs to avoid downtime.
- ### Construction
- Human centered design with 4-star certification for ergonomics and usability.
  - Wing-shaped handle with ergonomic design and hands-free opening with the elbow, making managing trays simpler (Registered Design at EPO).
  - Double thermo-glazed door with open frame construction, for cool outside door panel. Swing hinged easy-release inner glass on door for easy cleaning.
  - Seamless hygienic internal chamber with all rounded corners for easy cleaning.
  - 304 AISI stainless steel construction throughout.
  - Front access to control board for easy service.
  - IPX 5 spray water protection certification for easy cleaning.

APPROVAL: \_\_\_\_\_

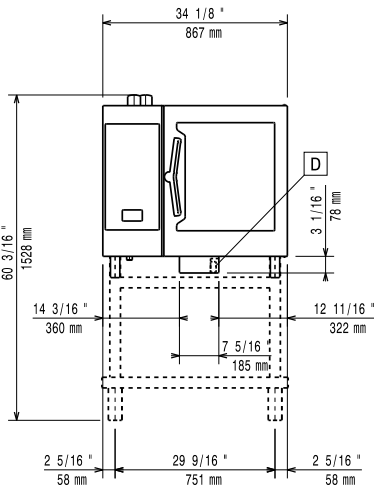
- Supplied with n.1 tray rack 1/1 GN, 67 mm pitch.

### Optional Accessories

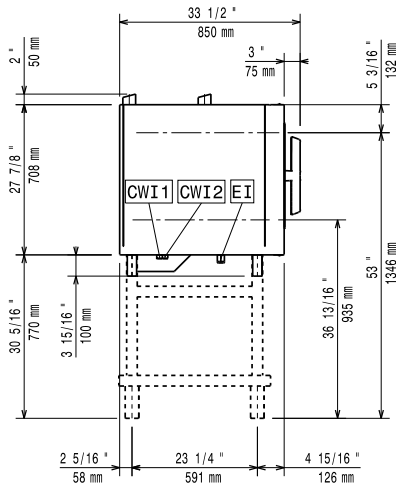
- |   |            |                          |  |            |                          |
|---|------------|--------------------------|--|------------|--------------------------|
| • Water softener with cartridge and flow meter for 6 & 10 GN 1/1 ovens (low-medium steam usage - less than 2hrs per day full steam) | PNC 920002 | <input type="checkbox"/> | • Wall mounted detergent tank holder   | PNC 922386 | <input type="checkbox"/> |
| • Water softener with cartridge and flow meter (high steam usage)   | PNC 920003 | <input type="checkbox"/> | • Tray rack with wheels, 6 GN 1/1, 65mm pitch  | PNC 922600 | <input type="checkbox"/> |
| • Water softener with salt for ovens with automatic regeneration of resin   | PNC 921305 | <input type="checkbox"/> | • Tray rack with wheels, 5 GN 1/1, 80mm pitch  | PNC 922606 | <input type="checkbox"/> |
| • Resin sanitizer for water softener (921305)   | PNC 921306 | <input type="checkbox"/> | • Bakery/pastry tray rack with wheels 400x600mm for 6 GN 1/1 oven and blast chiller freezer, 80mm pitch (5 runners)                        | PNC 922607 | <input type="checkbox"/> |
| • Wheel kit for 6 & 10 GN 1/1 and 2/1 GN oven base (not for the disassembled one)   | PNC 922003 | <input type="checkbox"/> | • Slide-in rack with handle for 6 & 10 GN 1/1 oven   | PNC 922610 | <input type="checkbox"/> |
| • Pair of AISI 304 stainless steel grids, GN 1/1  | PNC 922017 | <input type="checkbox"/> | • Open base with tray support for 6 & 10 GN 1/1 oven   | PNC 922612 | <input type="checkbox"/> |
| • Pair of grids for whole chicken (8 per grid - 1,2kg each), GN 1/1   | PNC 922036 | <input type="checkbox"/> | • Cupboard base with tray support for 6 & 10 GN 1/1 oven   | PNC 922614 | <input type="checkbox"/> |
| • AISI 304 stainless steel grid, GN 1/1   | PNC 922062 | <input type="checkbox"/> | • Hot cupboard base with tray support for 6 & 10 GN 1/1 oven holding GN 1/1 or 400x600mm   | PNC 922615 | <input type="checkbox"/> |
| • Grid for whole chicken (4 per grid - 1,2kg each), GN 1/2  | PNC 922086 | <input type="checkbox"/> | • External connection kit for liquid detergent and rinse aid   | PNC 922618 | <input type="checkbox"/> |
| • External side spray unit (needs to be mounted outside and includes support to be mounted on the oven)                             | PNC 922171 | <input type="checkbox"/> | • Grease collection kit for GN 1/1-2/1 cupboard base (trolley with 2 tanks, open/close device and drain)                                   | PNC 922619 | <input type="checkbox"/> |
| • Baking tray for 5 baguettes in perforated aluminum with silicon coating, 400x600x38mm   | PNC 922189 | <input type="checkbox"/> | • Stacking kit for electric 6+6 GN 1/1 ovens or electric 6+10 GN 1/1 GN ovens  | PNC 922620 | <input type="checkbox"/> |
| • Baking tray with 4 edges in perforated aluminum, 400x600x20mm   | PNC 922190 | <input type="checkbox"/> | • Trolley for slide-in rack for 6 & 10 GN 1/1 oven and blast chiller freezer   | PNC 922626 | <input type="checkbox"/> |
| • Baking tray with 4 edges in aluminum, 400x600x20mm  | PNC 922191 | <input type="checkbox"/> | • Trolley for mobile rack for 2 stacked 6 GN 1/1 ovens on riser  | PNC 922628 | <input type="checkbox"/> |
| • Pair of frying baskets  | PNC 922239 | <input type="checkbox"/> | • Trolley for mobile rack for 6 GN 1/1 on 6 or 10 GN 1/1 ovens   | PNC 922630 | <input type="checkbox"/> |
| • AISI 304 stainless steel bakery/pastry grid 400x600mm   | PNC 922264 | <input type="checkbox"/> | • Riser on feet for 2 6 GN 1/1 ovens or a 6 GN 1/1 oven on base  | PNC 922632 | <input type="checkbox"/> |
| • Double-step door opening kit  | PNC 922265 | <input type="checkbox"/> | • Riser on wheels for stacked 2x6 GN 1/1 ovens, height 250mm   | PNC 922635 | <input type="checkbox"/> |
| • Grid for whole chicken (8 per grid - 1,2kg each), GN 1/1  | PNC 922266 | <input type="checkbox"/> | • Stainless steel drain kit for 6 & 10 GN oven, dia=50mm   | PNC 922636 | <input type="checkbox"/> |
| • Grease collection tray, GN 1/1, H=100 mm  | PNC 922321 | <input type="checkbox"/> | • Plastic drain kit for 6 & 10 GN oven, dia=50mm   | PNC 922637 | <input type="checkbox"/> |
| • Kit universal skewer rack and 4 long skewers for Lengthwise ovens   | PNC 922324 | <input type="checkbox"/> | • Trolley with 2 tanks for grease collection   | PNC 922638 | <input type="checkbox"/> |
| • Universal skewer rack   | PNC 922326 | <input type="checkbox"/> | • Grease collection kit for open base (trolley with 2 tanks, open/close device and drain)  | PNC 922639 | <input type="checkbox"/> |
| • 4 long skewers  | PNC 922327 | <input type="checkbox"/> | • Wall support for 6 GN 1/1 oven   | PNC 922643 | <input type="checkbox"/> |
| • Smoker for lengthwise and crosswise oven (4 kinds of smoker wood chips are available on request)                                  | PNC 922338 | <input type="checkbox"/> | • Dehydration tray, GN 1/1, H=20mm   | PNC 922651 | <input type="checkbox"/> |
| • Water nanofilter for 6 & 10 GN 1/1 ovens  | PNC 922342 | <input type="checkbox"/> | • Flat dehydration tray, GN 1/1  | PNC 922652 | <input type="checkbox"/> |
| • External reverse osmosis filter for 6 & 10 GN 1/1 ovens   | PNC 922343 | <input type="checkbox"/> | • Open base for 6 & 10 GN 1/1 oven, disassembled - NO accessory can be fitted with the exception of 922382                                 | PNC 922653 | <input type="checkbox"/> |
| • Multipurpose hook   | PNC 922348 | <input type="checkbox"/> | • Bakery/pastry rack kit for 6 GN 1/1 oven with 5 racks 400x600mm and 80mm pitch   | PNC 922655 | <input type="checkbox"/> |
| • 4 flanged feet for 6 & 10 GN , 2", 100-130mm  | PNC 922351 | <input type="checkbox"/> | • Stacking kit for gas 6 GN 1/1 oven placed on 7kg and 15kg crosswise blast chiller freezer  | PNC 922657 | <input type="checkbox"/> |
| • Grid for whole duck (8 per grid - 1,8kg each), GN 1/1   | PNC 922362 | <input type="checkbox"/> | • Heat shield for stacked ovens 6 GN 1/1 on 6 GN 1/1   | PNC 922660 | <input type="checkbox"/> |
| • Tray support for 6 & 10 GN 1/1 disassembled open base   | PNC 922382 | <input type="checkbox"/> | • Heat shield for stacked ovens 6 GN 1/1 on 10 GN 1/1  | PNC 922661 | <input type="checkbox"/> |
|   |            |                          | • Heat shield for 6 GN 1/1 oven  | PNC 922662 | <input type="checkbox"/> |
|   |            |                          | • Compatibility kit for installation of 6 GN 1/1 electric oven on previous 6 GN 1/1 electric oven (old stacking kit 922319 is also needed) | PNC 922679 | <input type="checkbox"/> |
|   |            |                          | • Fixed tray rack for 6 GN 1/1 and 400x600mm grids   | PNC 922684 | <input type="checkbox"/> |
|   |            |                          | • Kit to fix oven to the wall  | PNC 922687 | <input type="checkbox"/> |
|   |            |                          | • Tray support for 6 & 10 GN 1/1 oven base   | PNC 922690 | <input type="checkbox"/> |

- 4 adjustable feet with black cover for 6 & 10 GN ovens, 100-115mm  PNC 922693
- Wifi board (NIU)  PNC 922695
- Detergent tank holder for open base  PNC 922699
- Bakery/pastry runners 400x600mm for 6 & 10 GN 1/1 oven base  PNC 922702
- Wheels for stacked ovens  PNC 922704
- Spit for lamb or suckling pig (up to 12kg) for GN 1/1 ovens  PNC 922709
- Mesh grilling grid, GN 1/1  PNC 922713
- Probe holder for liquids  PNC 922714
- Odourless hood with fan for 6 & 10 GN 1/1 electric ovens  PNC 922718
- Odourless hood with fan for 6+6 or 6+10 GN 1/1 electric ovens  PNC 922722
- Condensation hood with fan for 6 & 10 GN 1/1 electric oven  PNC 922723
- Condensation hood with fan for stacking 6+6 or 6+10 GN 1/1 electric ovens  PNC 922727
- Exhaust hood with fan for 6 & 10 GN 1/1 ovens  PNC 922728
- Exhaust hood with fan for stacking 6+6 or 6+10 GN 1/1 ovens  PNC 922732
- Exhaust hood without fan for 6&10 1/1GN ovens  PNC 922733
- Exhaust hood without fan for stacking 6+6 or 6+10 GN 1/1 ovens  PNC 922737
- Fixed tray rack, 5 GN 1/1, 85mm pitch  PNC 922740
- 4 high adjustable feet for 6 & 10 GN ovens, 230-290mm  PNC 922745
- Tray for traditional static cooking, H=100mm  PNC 922746
- Double-face griddle, one side ribbed and one side smooth, 400x600mm  PNC 922747
- Trolley for grease collection kit  PNC 922752
- Water inlet pressure reducer  PNC 922773
- Non-stick universal pan, GN 1/1, H=20mm  PNC 925000
- Non-stick universal pan, GN 1/1, H=40mm  PNC 925001
- Non-stick universal pan, GN 1/1, H=60mm  PNC 925002
- Double-face griddle, one side ribbed and one side smooth, GN 1/1  PNC 925003
- Aluminum grill, GN 1/1  PNC 925004
- Frying pan for 8 eggs, pancakes, hamburgers, GN 1/1  PNC 925005
- Flat baking tray with 2 edges, GN 1/1  PNC 925006
- Baking tray for 4 baguettes, GN 1/1  PNC 925007
- Potato baker for 28 potatoes, GN 1/1  PNC 925008
- Non-stick universal pan, GN 1/2, H=20mm  PNC 925009
- Non-stick universal pan, GN 1/2, H=40mm  PNC 925010
- Non-stick universal pan, GN 1/2, H=60mm  PNC 925011
- Wood chips: oak, 450gr  PNC 930209
- Wood chips: hickory, 450gr  PNC 930210
- Wood chips: maple, 450gr  PNC 930211
- Wood chips: cherry, 450gr  PNC 930212

Front

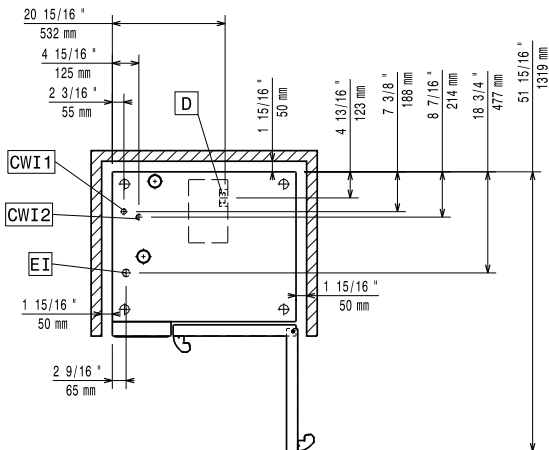


Side



CWI1 = Cold Water inlet 1                      EI = Electrical inlet (power)  
 CWI2 = Cold Water Inlet 2  
 D = Drain  
 DO = Overflow drain pipe

Top



### Electric

**Supply voltage:**

217910 (ECO61C2C0)                      220-240 V/3 ph/50-60 Hz  
 217920 (ECO61C2A0)                      380-415 V/3N ph/50-60 Hz

**Electrical power, default:**

11.1 kW

**Circuit breaker required**

### Water:

**Water inlet connections "CWI1-CWI2":**

3/4"

**Pressure, bar min/max:**

1-4.5 bar

**Drain "D":**

50mm

**Max inlet water supply temperature:**

30 °C

**Hardness:**

5 °fH / 2.8 °dH

**Chlorides:**

<10 ppm

**Conductivity:**

>285 µS/cm

**Electrolux** recommends the use of treated water, based on testing of specific water conditions.

Please refer to user manual for detailed water quality information.

### Installation:

**Clearance:**

Clearance: 5 cm rear and right hand sides.

**Suggested clearance for service access:**

50 cm left hand side.

### Capacity:

**Trays type:**

6 - 1/1 Gastronorm

**Max load capacity:**

30 kg

### Key Information:

**Door hinges:**

Right Side

**External dimensions, Width:**

867 mm

**External dimensions, Height:**

808 mm

**External dimensions, Depth:**

775 mm

**Weight:**

112.5 kg

**Net weight:**

112.5 kg

**Shipping weight:**

127.5 kg

**Shipping volume:**

0.84 m<sup>3</sup>