



**Electrolux**  
PROFESSIONAL

## Modular Cooking Range Line 700XP 4 Hot Plate Electric Induction Cooking Top Range

ITEM # \_\_\_\_\_  
MODEL # \_\_\_\_\_  
NAME # \_\_\_\_\_  
SIS # \_\_\_\_\_  
AIA # \_\_\_\_\_

**Electrolux**  
PROFESSIONAL

700XP 4 Hot Plate Electric Induction Cooking Top Range  
Modular Cooking Range Line



**371021 (E7INEH4000)**

4 zone hot plate electric  
induction cooking top range  
- 400V

**371132 (E7INEH400N)**

4 zone hot plate electric  
induction cooking top range  
- 230V

### Short Form Specification

#### Item No. \_\_\_\_\_

6 mm thick glass ceramic cooking surface with 4 independently controlled 3.5 kW induction zones. Induction top surface with seamless transition between individual heating zones. Exterior panels in stainless steel with Scotch Brite finish. One piece pressed work top in 1.5 mm thick stainless steel. Right-angled side edges to allow flush-fitting junction between units.

### Main Features

- 6mm glass ceramic cooking surface with 4 independently controlled induction zones with a power of 3.5 kW per zone.
- Almost the entire surface of the ceramic plate can be used without "dead" spots.
- Indicating lamp for each zone located on control console.
- Induction plates endowed with overheating safety device.
- Power to the individual zones can be set with progressive output i.e. fine regulation at the lower and larger progress at the upper levels.
- Low heat dissipation to the kitchen.
- The smooth, glass ceramic plate is not directly heated, so there is no burning on cooking surface.
- IPx4 water protection.
- Pots diameter to be used : min 12cm, max 28 cm in order to obtain maximum heating efficiency.

### Construction

- All exterior panels in Stainless Steel with Scotch Brite finishing.
- One piece pressed 1.5 mm work top in Stainless steel.
- Model has right-angled side edges to allow flush fitting joints between units, eliminating gaps and possible dirt traps.

### Optional Accessories

- |  |                                     |
|--|-------------------------------------|
| • Support for bridge type installation, 800mm                        | PNC 206137 <input type="checkbox"/> |
| • Support for bridge type installation, 1000mm                       | PNC 206138 <input type="checkbox"/> |
| • Support for bridge type installation, 1200mm                       | PNC 206139 <input type="checkbox"/> |
| • Support for bridge type installation, 1400mm                       | PNC 206140 <input type="checkbox"/> |
| • Support for bridge type installation, 1600mm                       | PNC 206141 <input type="checkbox"/> |
| • Water column with swivel arm (water column extension not included) | PNC 206289 <input type="checkbox"/> |
| • Water column extension for 700 line                                | PNC 206291 <input type="checkbox"/> |
| • Chimney upstand, 800mm   | PNC 206304 <input type="checkbox"/> |
| • Chimney grid net, 400mm (700XP/900)                                | PNC 206400 <input type="checkbox"/> |
| • 2 side covering panels for top appliances                          | PNC 216277 <input type="checkbox"/> |

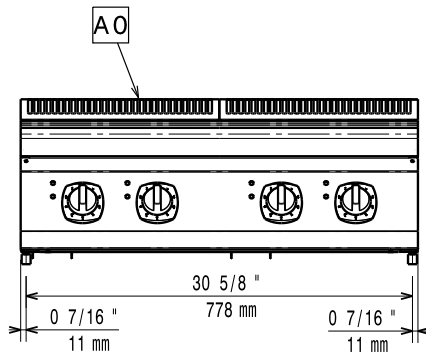
APPROVAL: \_\_\_\_\_



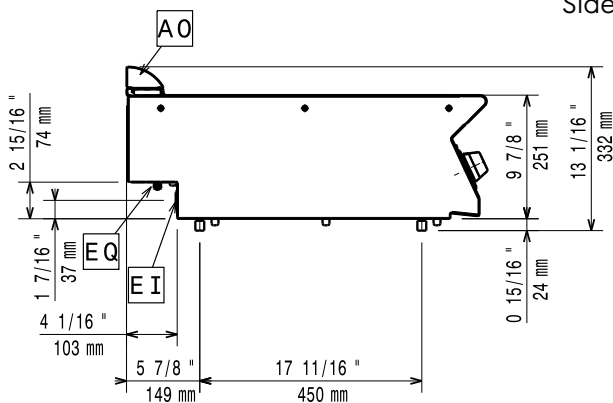
Experience the Excellence  
[www.electroluxprofessional.com](http://www.electroluxprofessional.com)

- Stainless steel universal frying pan with stainless steel handle (diam. 200mm) suitable for induction and all other heating sources PNC 653596 ☐
- Universal frying pan with stainless steel handle (diam. 240mm) suitable for induction and all other heating sources PNC 653597 ☐
- Universal frying pan with stainless steel handle (diam. 280mm) suitable for induction and all other heating sources PNC 653598 ☐

Front

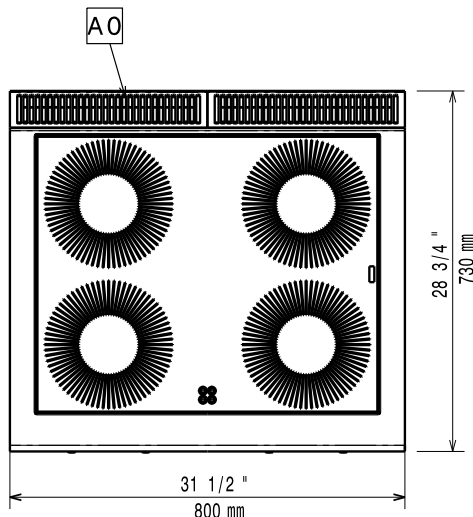


Side



EI = Electrical inlet (power)  
 EQ = Equipotential screw

Top



### Electric

#### Supply voltage:

371021 (E7INEH4000)	380-415 V/3 ph/50/60 Hz
371132 (E7INEH400N)	230 V/3 ph/50/60 Hz

#### Total Watts:

14 kW

#### Predisposed for:

371021 (E7INEH4000)	380-415V 3~ 50/60Hz
	14kW

### Key Information:

#### Induction Top Dimensions

(width): 800 mm

#### Induction Top Dimensions

(depth): 730 mm

External dimensions, Width: 800 mm

External dimensions, Height: 250 mm

External dimensions, Depth: 730 mm

Net weight: 57 kg

#### Shipping weight:

371021 (E7INEH4000)	67 kg
371132 (E7INEH400N)	69 kg

#### Shipping height:

371021 (E7INEH4000)	530 mm
371132 (E7INEH400N)	520 mm

Shipping width: 820 mm

Shipping depth: 860 mm

Shipping volume: 0.37 m<sup>3</sup>

If appliance is set up or next to or against temperature sensitive furniture or similar, a safety gap of approximately 150 mm should be maintained or some form of heat insulation fitted.

Induction compatible pots & pans must be used.

#### Certification group:

371021 (E7INEH4000)	IH740
371132 (E7INEH400N)	NIN87F