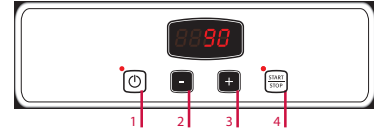




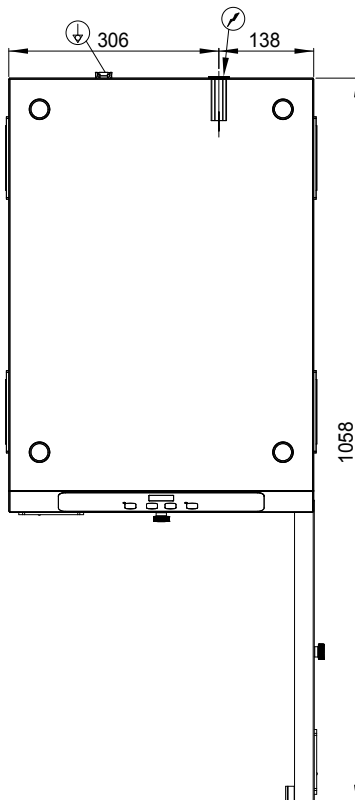
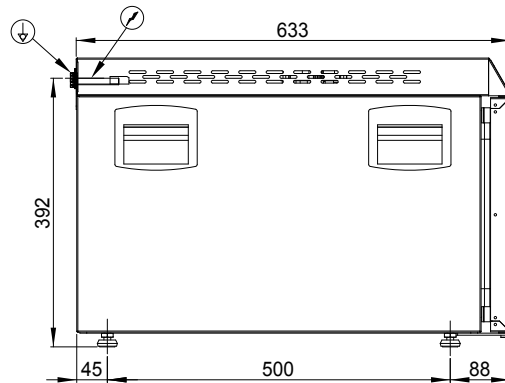
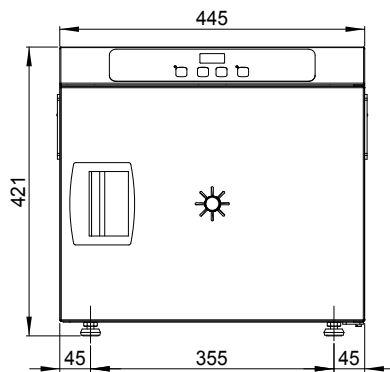
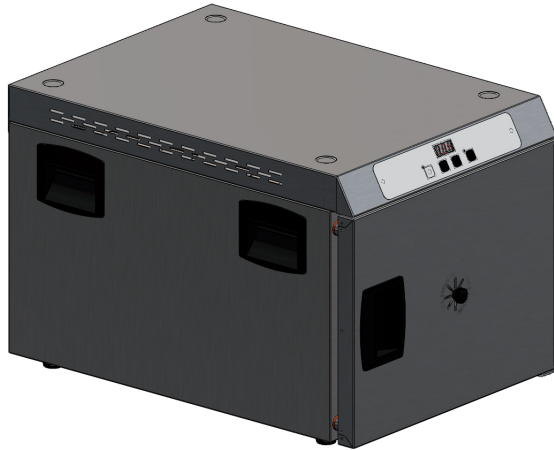
# GM0311E

## HOLDING OVEN 3 (1/1 GN) ELECTRONIC VERSION

- Aisi 430 oven chamber with rounded corners.
- Height-adjustable feet.
- Automatic preheating.
- Ergonomic handles to aid moving and bosses for stacking.
- Reversible door



- 1 On/Off switch .
- 2 Increase temperature.
- 3 Decrease temperature.
- 4 Start/Stop cycle.



### TECHINICAL DATA

Dimensions: **445x633x421 mm**

Volume: **0,11 m<sup>3</sup>**

Weight: **25 Kg**

Chamber capacity: **3x(1/1 GN)**

Distance between layers: **75 mm**

Net dimension of oven cavity: **370x270x550 mm (LxHxP)**

Oven cavity power: **0,75 kW**

Total electric power: **0,75 kW**

Power supply voltage: **1N 230V AC-50Hz**